



GMT MONTHLY MEMBERSHIP PROGRESS REPORT

Results as of: 7/31/2019

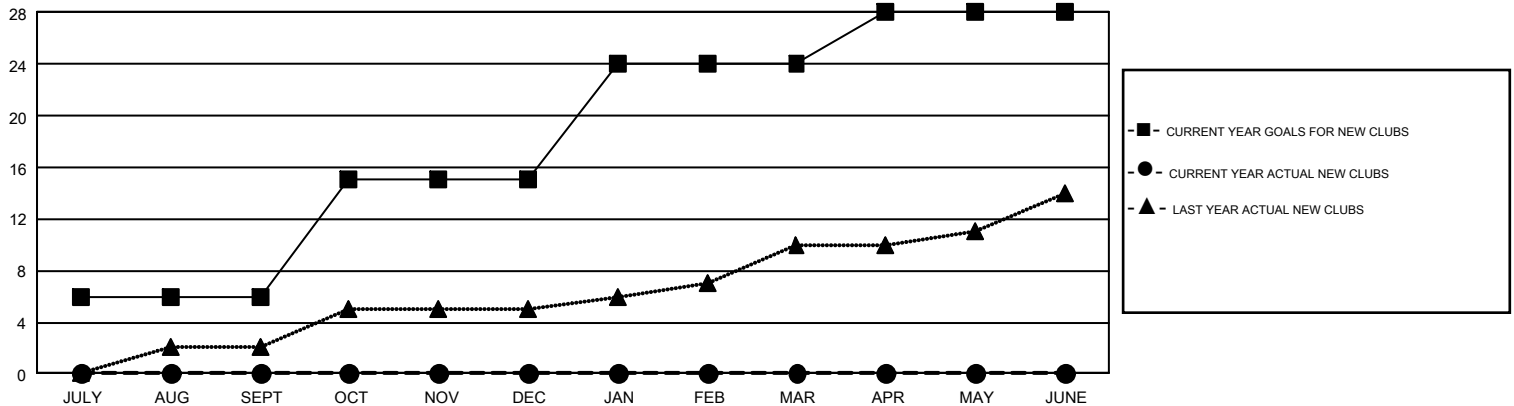
GMT Constitutional Area 8, Group E

GMT: OPEN

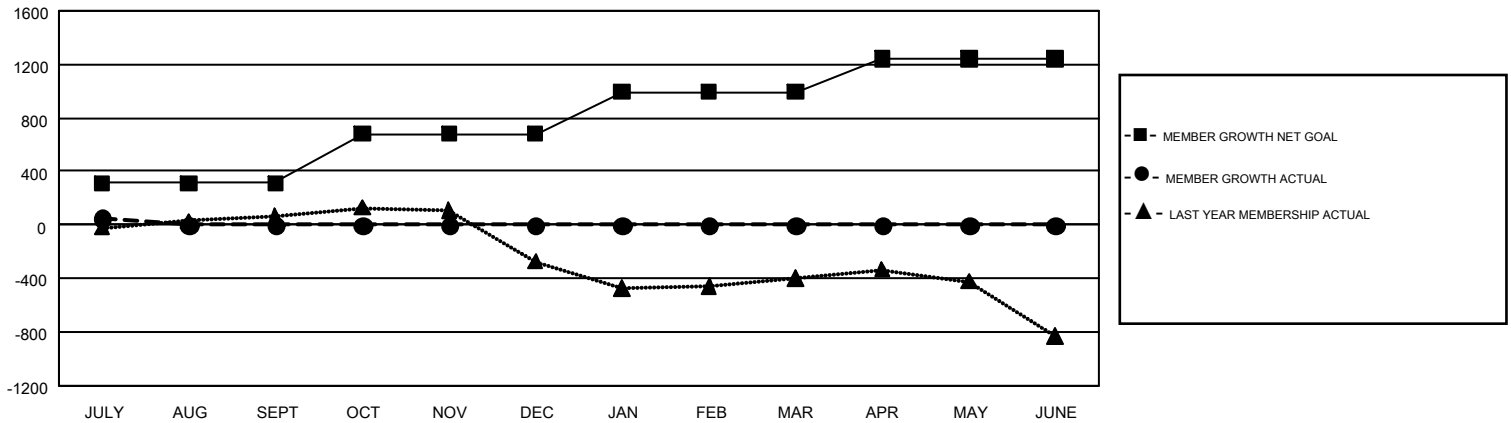
REPORT DOES NOT INCLUDE CLUBS IN UNDISTRICTED AREAS.

Clubs				Members			
RESULTS FOR 2019-2020				RESULTS FOR 2019-2020			
QUARTER	NEW CLUB GOAL	NEW CLUBS	DROPPED CLUBS	QUARTER	MEMBER GROWTH NET GOAL	MEMBER GROWTH ACTUAL	DROPPED MEMBERS ACTUAL (including transfers)
JULY/AUG/SEPT	6	0	1	JULY/AUG/SEPT	312	153	89
OCT/NOV/DEC	9	0	0	OCT/NOV/DEC	367	0	0
JAN/FEB/MAR	9	0	0	JAN/FEB/MAR	317	0	0
APR/MAY/JUNE	4	0	0	APR/MAY/JUNE	245	0	0

GOALS AND ACTUAL NEW CLUBS CUMULATIVE



GOALS AND ACTUAL MEMBERS CUMULATIVE



DROPPED CLUBS: 1	39 CLUBS OF 244 ADDED 1 OR MORE NEW MEMBERS	GENDER DISTRIBUTION MALE 3,648 (59.76%) FEMALE 2,456 (40.24%)
DROPPED MEMBERS DECEASED 3 CLUB CANCELLED 0 OTHER 86 <hr/> TOTAL 89	CLICK HERE FOR CUMULATIVE MEMBERSHIP DATA	TOTAL FAMILY UNIT MEMBERS 1,358 FAMILY MEMBERS PAYING HALF DUES 778